

Chem-Impex International, Inc.

Tel: (630) 766-2112

E-mail: sales@chemimpex.com

Shipping and Correspondence:

935 Dillon Drive

Wood Dale, IL 60191

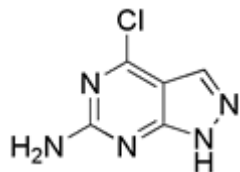
Fax: (630) 766-2218

Web site: www.chemimpex.com

Manufacturing site:

825 Dillon Drive

Wood Dale, IL 60191



Product Specifications

Catalogue Number	26239
Product	4-Chloro-1H-pyrazolo[3,4-d]pyrimidin-6-amine
CAS Number	100644-65-3
Molecular Formula	C ₅ H ₄ ClN ₅
Molecular Weight	169.58

Appearance	Yellow solid or yellow powder
Water Content (Karl Fisher)	≤ 0.5%
Residue On Ignition	≤ 0.3%
¹H NMR	Conforms to structure
Purity	≥ 95% (NMR)
Storage	Store at ≤ -20 °C

For Laboratory Use Only