

# *Chem-Impex International, Inc.*

---

**Tel:** (630) 766-2112

**E-mail:** sales@chemimpex.com

**Shipping and Correspondence:**

935 Dillon Drive

Wood Dale, IL 60191

**Fax:** (630) 766-2218

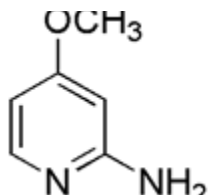
**Web site:** www.chemimpex.com

**Manufacturing site:**

825 Dillon Drive

Wood Dale, IL 60191

---



## *Product Specifications*

<b>Catalogue Number</b>	26221
<b>Product</b>	<b>2-Amino-4-methoxypyridine</b> 4-Methoxypyridin-2-amine
<b>CAS Number</b>	10201-73-7
<b>Molecular Formula</b>	C <sub>6</sub> H <sub>8</sub> N <sub>2</sub> O
<b>Molecular Weight</b>	124.14
<b>Appearance</b>	Off-white to yellow crystalline powder
<b><sup>1</sup>H NMR</b>	Conforms to structure
<b>Purity</b>	≥ 95% (NMR)
<b>Storage</b>	Store at 0-8 °C

---

**For Laboratory Use Only**