

# *Chem-Impex International, Inc.*

---

**Tel:** (630) 766-2112

**E-mail:** sales@chemimpex.com

**Shipping and Correspondence:**

935 Dillon Drive

Wood Dale, IL 60191

**Fax:** (630) 766-2218

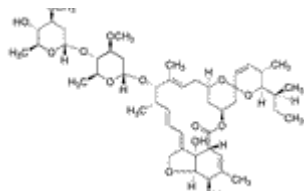
**Web site:** www.chemimpex.com

**Manufacturing site:**

825 Dillon Drive

Wood Dale, IL 60191

---



## *Product Specifications*

|                          |   |
|--------------------------|---|
| <b>Catalogue Number</b>  | 26150   |
| <b>Product</b>           | <b>Avermectin b1a</b>                           |
| <b>CAS Number</b>        | 65195-55-3                                      |
| <b>Molecular Formula</b> | C <sub>48</sub> H <sub>72</sub> O <sub>14</sub> |
| <b>Molecular Weight</b>  | 873.08  |

---

|                          |                       |
|--------------------------|-----------------------|
| <b>Appearance</b>        | White solid           |
| <b><sup>1</sup>H NMR</b> | Conforms to structure |
| <b>Assay</b>             | ≥ 95%                 |
| <b>Storage</b>           | Store at 0 - 8 °C     |

**For Laboratory Use Only**