

Chem-Impex International, Inc.

Tel: (630) 766-2112

E-mail: sales@chemimpex.com

Shipping and Correspondence:

935 Dillon Drive

Wood Dale, IL 60191

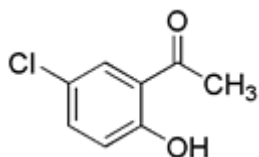
Fax: (630) 766-2218

Web site: www.chemimpex.com

Manufacturing site:

825 Dillon Drive

Wood Dale, IL 60191



Product Specifications

Catalogue Number	26010
Product	5-Chloro-2-hydroxyacetophenone 1-(5-Chloro-2-hydroxyphenyl)ethanone
CAS Number	1450-74-4
Molecular Formula	C ₈ H ₇ ClO ₂
Molecular Weight	170.59

Appearance	Pale yellow powder
Solubility	Clear solution in acetone and alcohol
Melting Point	52 - 53 °C
Purity	≥ 99%
Storage	Store at 0-8°C

For Laboratory Use Only