

Chem-Impex International, Inc.

Tel: (630) 766-2112

E-mail: sales@chemimpex.com

Shipping and Correspondence:

935 Dillon Drive

Wood Dale, IL 60191

Fax: (630) 766-2218

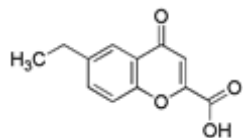
Web site: www.chemimpex.com

Manufacturing site:

825 Dillon Drive

Wood Dale, IL 60191

Product Specifications



Catalogue Number 26000

Product **6-Ethylchromone-2-carboxylic acid**

6-Ethyl-4-oxo-4*H*-chromene-2-carboxylic acid

CAS Number 5527-91-3

Molecular Formula C₁₂H₁₀O₄

Molecular Weight 218.21

Appearance Off-white powder

Melting Point 212-221 °C

Purity by HPLC ≥ 98%

Storage Store at 0-8°C

For Laboratory Use Only