

# Chem-Impex International, Inc.

---

**Tel:** (630) 766-2112

**E-mail:** sales@chemimpex.com

**Shipping and Correspondence:**

935 Dillon Drive

Wood Dale, IL 60191

**Fax:** (630) 766-2218

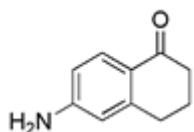
**Web site:** www.chemimpex.com

**Manufacturing site:**

825 Dillon Drive

Wood Dale, IL 60191

---



## Product Specifications

**Catalogue Number** 25952

**Product** **6-Amino-1-tetralone**

6-Amino-3,4-dihydro-1(2*H*)-naphthalenone

6-Amino-1,2,3,4-tetrahydro naphthalene-1-one

**CAS Number** 3470-53-9

**Molecular Formula** C<sub>10</sub>H<sub>11</sub>NO

**Molecular Weight** 161.2

---

**Appearance** Beige to yellow powder

**Melting Point** 126-134 °C

**Purity by HPLC** ≥ 99%

**Storage** Store at 0-8 °C

**For Laboratory Use Only**