

Chem-Impex International, Inc.

Tel: (630) 766-2112

E-mail: sales@chemimpex.com

Shipping and Correspondence:

935 Dillon Drive

Wood Dale, IL 60191

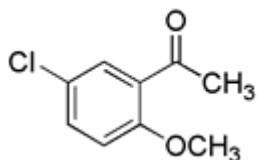
Fax: (630) 766-2218

Web site: www.chemimpex.com

Manufacturing site:

825 Dillon Drive

Wood Dale, IL 60191



Product Specifications

Catalogue Number	25920
Product	5-Chloro-2-methoxyacetophenone
	1-(5-Chloro-2-methoxyphenyl)ethanone
	1-Acetyl-5-chloro-2-methoxybenzene
CAS Number	6342-64-9
Molecular Formula	C ₉ H ₉ ClO ₂
Molecular Weight	184.62
<hr/>	
Appearance	Colorless liquid
Boiling point	110 °C ~ 5 mm
Purity by GC	≥ 97%
Storage	Store at 0-8°C

For Laboratory Use Only