

Chem-Impex International, Inc.

Tel: (630) 766-2112

E-mail: sales@chemimpex.com

Shipping and Correspondence:

935 Dillon Drive

Wood Dale, IL 60191

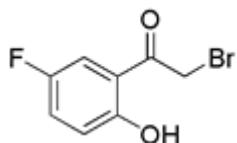
Fax: (630) 766-2218

Web site: www.chemimpex.com

Manufacturing site:

825 Dillon Drive

Wood Dale, IL 60191



Product Specifications

Catalogue Number	25915
Product	2-Bromo-1-(5-fluoro-2-hydroxyphenyl)ethanone 2-Bromo-5'-fluoro-2'-hydroxyacetophenone
CAS Number	126581-65-5
Molecular Formula	C ₈ H ₆ BrFO ₂
Molecular Weight	233.04
Appearance	Yellow crystalline solid
Melting Point	82-90 °C
Purity by HPLC	≥ 97%
Storage	Store at 0-8°C

For Laboratory Use Only