

Chem-Impex International, Inc.

Tel: (630) 766-2112

E-mail: sales@chemimpex.com

Shipping and Correspondence:

935 Dillon Drive

Wood Dale, IL 60191

Fax: (630) 766-2218

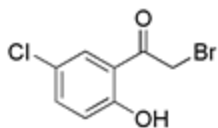
Web site: www.chemimpex.com

Manufacturing site:

825 Dillon Drive

Wood Dale, IL 60191

Product Specifications



Catalogue Number	25913
Product	2-Bromo-1-(5-chloro-2-hydroxyphenyl)ethanone 2-Bromo-5'-chloro-2'-hydroxyacetophenone
CAS Number	52727-99-8
Molecular Formula	C ₈ H ₆ BrClO ₂
Molecular Weight	249.49
Appearance	Yellow crystalline solid
Melting Point	62-68 °C
Purity by HPLC	≥ 97%
Storage	Store at 0-8°C

For Laboratory Use Only