

# *Chem-Impex International, Inc.*

---

**Tel:** (630) 766-2112

**E-mail:** sales@chemimpex.com

**Shipping and Correspondence:**

935 Dillon Drive

Wood Dale, IL 60191

**Fax:** (630) 766-2218

**Web site:** www.chemimpex.com

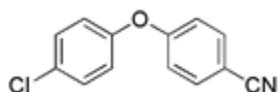
**Manufacturing site:**

825 Dillon Drive

Wood Dale, IL 60191

---

## *Product Specifications*



<b>Catalogue Number</b>	25896
<b>Product</b>	<b>4-Chloro-4'-cyanodiphenyl ether</b>
<b>CAS Number</b>	74448-92-3
<b>Molecular Formula</b>	C <sub>13</sub> H <sub>8</sub> ClNO
<b>Molecular Weight</b>	229.67

---

<b>Appearance</b>	White crystals
<b>Melting Point</b>	81-88 °C
<b>Purity by HPLC</b>	≥ 99%
<b>Storage</b>	Store at 0-8 °C

**For Laboratory Use Only**