

# Chem-Impex International, Inc.

---

**Tel:** (630) 766-2112

**E-mail:** sales@chemimpex.com

**Shipping and Correspondence:**

935 Dillon Drive

Wood Dale, IL 60191

**Fax:** (630) 766-2218

**Web site:** www.chemimpex.com

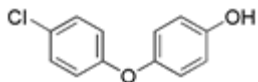
**Manufacturing site:**

825 Dillon Drive

Wood Dale, IL 60191

---

## Product Specifications



**Catalogue Number** 25838

**Product** **4-(4-Chlorophenoxy)phenol**

4-Chloro-4'-hydroxydiphenyl ether

**CAS Number** 21567-18-0

**Molecular Formula** C<sub>12</sub>H<sub>9</sub>ClO<sub>2</sub>

**Molecular Weight** 220.65

---

**Appearance** Beige solid

**<sup>1</sup>H NMR** Conforms to structure

**Assay** ≥ 95%

**Storage** Store at 0-8°C

**For Laboratory Use Only**