

Chem-Impex International, Inc.

Tel: (630) 766-2112

E-mail: sales@chemimpex.com

Shipping and Correspondence:

935 Dillon Drive

Wood Dale, IL 60191

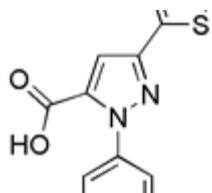
Fax: (630) 766-2218

Web site: www.chemimpex.com

Manufacturing site:

825 Dillon Drive

Wood Dale, IL 60191



Product Specifications

Catalogue Number	25829
Product	1-(3-Chlorophenyl)-3-(thiophen-2-yl)-1H-
CAS Number	618382-83-5
Molecular Formula	C ₁₄ H ₉ ClN ₂ O ₂ S
Molecular Weight	304.76

Appearance	Off-white amorphous powder
Melting Point	219 - 223 °C
Purity by HPLC	≥ 98%
Storage	Store at 0 - 8 °C

For Laboratory Use Only