

# *Chem-Impex International, Inc.*

---

**Tel:** (630) 766-2112

**E-mail:** sales@chemimpex.com

**Shipping and Correspondence:**

935 Dillon Drive

Wood Dale, IL 60191

**Fax:** (630) 766-2218

**Web site:** www.chemimpex.com

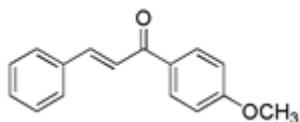
**Manufacturing site:**

825 Dillon Drive

Wood Dale, IL 60191

---

## *Product Specifications*



<b>Catalogue Number</b>	25773
<b>Product</b>	<b>1-(4-Methoxyphenyl)-3-phenyl-2-propen-1-one</b> 2-Benzylidene-4'-methoxyacetophenone 4'-Methoxychalcone
<b>CAS Number</b>	959-23-9
<b>Molecular Formula</b>	C <sub>16</sub> H <sub>14</sub> O <sub>2</sub>
<b>Molecular Weight</b>	238.29
<hr/>	
<b>Appearance</b>	Pale yellow crystalline powder
<b>Solubility</b>	Clear solution in Acetone and alcohol
<b>Melting Point</b>	98-105 °C
<b>Purity</b>	≥ 98%
<b>Storage</b>	Store at 0-8 °C

**For Laboratory Use Only**