

Chem-Impex International, Inc.

Tel: (630) 766-2112

E-mail: sales@chemimpex.com

Shipping and Correspondence:

935 Dillon Drive

Wood Dale, IL 60191

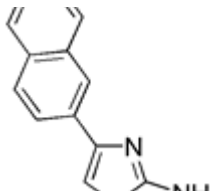
Fax: (630) 766-2218

Web site: www.chemimpex.com

Manufacturing site:

825 Dillon Drive

Wood Dale, IL 60191



Product Specifications

Catalogue Number	25757
Product	2-Amino-4-(2-naphthyl)thiazole 4-Naphthalen-2-yl-thiazol-2-yl-amine
CAS Number	21331-43-1
Molecular Formula	C ₁₃ H ₁₀ N ₂ S
Molecular Weight	226.3
Appearance	Cream color amorphous powder
Melting Point	152 - 155 °C
Purity by HPLC	≥ 99%
Storage	Store at 0 - 8 °C

For Laboratory Use Only