

Chem-Impex International, Inc.

Tel: (630) 766-2112

E-mail: sales@chemimpex.com

Shipping and Correspondence:

935 Dillon Drive

Wood Dale, IL 60191

Fax: (630) 766-2218

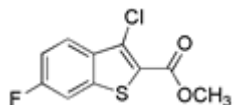
Web site: www.chemimpex.com

Manufacturing site:

825 Dillon Drive

Wood Dale, IL 60191

Product Specifications



Catalogue Number	25696
Product	Methyl 3-chloro-6-fluorobenzo[b]thiophene-2-carboxylate
CAS Number	21211-20-1
Molecular Formula	C ₁₀ H ₆ ClFO ₂ S
Molecular Weight	244.67

Appearance	White needles
Melting Point	118-124 °C
Purity by HPLC	≥ 97%
Storage	Store at 0-8°C

For Laboratory Use Only