

# Chem-Impex International, Inc.

---

**Tel:** (630) 766-2112

**E-mail:** sales@chemimpex.com

**Shipping and Correspondence:**

935 Dillon Drive

Wood Dale, IL 60191

**Fax:** (630) 766-2218

**Web site:** www.chemimpex.com

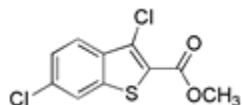
**Manufacturing site:**

825 Dillon Drive

Wood Dale, IL 60191

---

## Product Specifications



<b>Catalogue Number</b>	25693
<b>Product</b>	<b>Methyl 3,6-dichlorobenzo[b]thiophene-2-carboxylate</b>
<b>CAS Number</b>	21211-18-7
<b>Molecular Formula</b>	C <sub>10</sub> H <sub>6</sub> Cl <sub>2</sub> O <sub>2</sub> S
<b>Molecular Weight</b>	261.13

---

<b>Appearance</b>	Off-white amorphous powder
<b>Melting Point</b>	129-135 °C
<b>Purity by HPLC</b>	≥ 98%
<b>Storage</b>	Store at 0-8°C

**For Laboratory Use Only**