

# *Chem-Impex International, Inc.*

---

**Tel:** (630) 766-2112

**E-mail:** sales@chemimpex.com

**Shipping and Correspondence:**

935 Dillon Drive

Wood Dale, IL 60191

**Fax:** (630) 766-2218

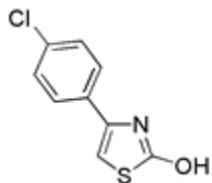
**Web site:** www.chemimpex.com

**Manufacturing site:**

825 Dillon Drive

Wood Dale, IL 60191

---



## *Product Specifications*

<b>Catalogue Number</b>	25660
<b>Product</b>	<b>4-(4-Chlorophenyl)-2-hydroxythiazole</b>
<b>CAS Number</b>	2103-98-2
<b>Molecular Formula</b>	C <sub>9</sub> H <sub>6</sub> ClNOS
<b>Molecular Weight</b>	211.67
<hr/>	
<b>Appearance</b>	Cream color powder
<b>Melting Point</b>	218-224 °C
<b>Purity by HPLC</b>	≥ 98%
<b>Storage</b>	Store at 0-8°C

**For Laboratory Use Only**