

Chem-Impex International, Inc.

Tel: (630) 766-2112

E-mail: sales@chemimpex.com

Shipping and Correspondence:

935 Dillon Drive

Wood Dale, IL 60191

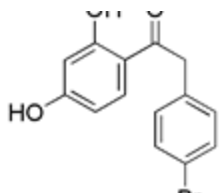
Fax: (630) 766-2218

Web site: www.chemimpex.com

Manufacturing site:

825 Dillon Drive

Wood Dale, IL 60191



Product Specifications

Catalogue Number	25620
Product	2-(4-Bromophenyl)-1-(2,4-dihydroxyphenyl) ethanone
CAS Number	92152-60-8
Molecular Formula	C ₁₄ H ₁₁ BrO ₃
Molecular Weight	307.14

Appearance	Off-white solid
Melting Point	173-180 °C
Purity by HPLC	≥ 99%
Storage	Store at 0-8 °C

For Laboratory Use Only