

Chem-Impex International, Inc.

Tel: (630) 766-2112

E-mail: sales@chemimpex.com

Shipping and Correspondence:

935 Dillon Drive

Wood Dale, IL 60191

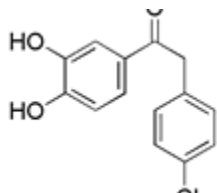
Fax: (630) 766-2218

Web site: www.chemimpex.com

Manufacturing site:

825 Dillon Drive

Wood Dale, IL 60191



Product Specifications

Catalogue Number	25618
Product	2-(4-Chlorophenyl)-1-(2,4-dihydroxyphenyl)ethanone 2(4'-Chlorophenyl)-2',4'-dihydroxy acetophenone
CAS Number	15485-64-0
Molecular Formula	C ₁₄ H ₁₁ ClO ₃
Molecular Weight	262.69
<hr/>	
Appearance	Cream color needles
Melting Point	157-164 °C
Purity by HPLC	≥ 99%
Storage	Store at 0-8 °C

For Laboratory Use Only