

# *Chem-Impex International, Inc.*

---

**Tel:** (630) 766-2112

**E-mail:** sales@chemimpex.com

**Shipping and Correspondence:**

935 Dillon Drive

Wood Dale, IL 60191

**Fax:** (630) 766-2218

**Web site:** www.chemimpex.com

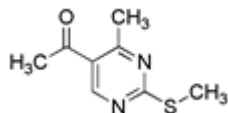
**Manufacturing site:**

825 Dillon Drive

Wood Dale, IL 60191

---

## *Product Specifications*



<b>Catalogue Number</b>	25590
<b>Product</b>	<b>1-(4-Methyl-2-(methylthio)pyrimidin-5-yl) ethanone</b>
<b>CAS Number</b>	66373-26-0
<b>Molecular Formula</b>	C <sub>8</sub> H <sub>10</sub> N <sub>2</sub> OS
<b>Molecular Weight</b>	182.25

---

<b>Appearance</b>	White needles
<b>Melting Point</b>	85 - 88 °C
<b>Purity by HPLC</b>	≥ 99%
<b>Storage</b>	Store at 0-8°C

**For Laboratory Use Only**