

Chem-Impex International, Inc.

Tel: (630) 766-2112

E-mail: sales@chemimpex.com

Shipping and Correspondence:

935 Dillon Drive

Wood Dale, IL 60191

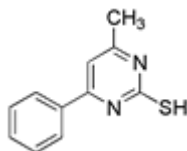
Fax: (630) 766-2218

Web site: www.chemimpex.com

Manufacturing site:

825 Dillon Drive

Wood Dale, IL 60191



Product Specifications

Catalogue Number	25584
Product	4-Methyl-6-phenyl-pyrimidine-2-thiol
CAS Number	27955-44-8
Molecular Formula	C ₁₁ H ₁₀ N ₂ S
Molecular Weight	202.28

Appearance	Yellow powder
Melting Point	202 - 204 °C
¹H NMR	Conforms to structure
Purity	≥ 95%
Storage	Store at 0 - 8 °C

For Laboratory Use Only