

Chem-Impex International, Inc.

Tel: (630) 766-2112

E-mail: sales@chemimpex.com

Shipping and Correspondence:

935 Dillon Drive

Wood Dale, IL 60191

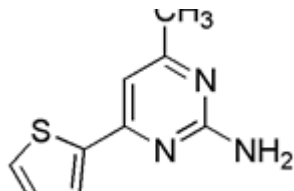
Fax: (630) 766-2218

Web site: www.chemimpex.com

Manufacturing site:

825 Dillon Drive

Wood Dale, IL 60191



Product Specifications

Catalogue Number	25583
Product	4-Methyl-6-(thiophen-2-yl)pyrimidin-2-amine 4-Methyl-6-(2-thienyl)-2-pyrimidinamine
CAS Number	26963-43-9
Molecular Formula	C ₉ H ₉ N ₃ S
Molecular Weight	191.26
Appearance	Off-white needles
Melting Point	166-173 °C
Purity by HPLC	≥ 99%
Storage	Store at 0-8°C

For Laboratory Use Only