

Chem-Impex International, Inc.

Tel: (630) 766-2112

E-mail: sales@chemimpex.com

Shipping and Correspondence:

935 Dillon Drive

Wood Dale, IL 60191

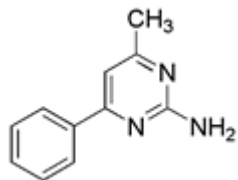
Fax: (630) 766-2218

Web site: www.chemimpex.com

Manufacturing site:

825 Dillon Drive

Wood Dale, IL 60191



Product Specifications

Catalogue Number	25579
Product	4-Methyl-6-phenylpyrimidin-2-amine
CAS Number	15755-15-4
Molecular Formula	C ₁₁ H ₁₁ N ₃
Molecular Weight	185.23
<hr/>	
Appearance	White powder
Melting Point	167-174 °C
Purity by HPLC	≥ 98%
Storage	Store at 0-8°C

For Laboratory Use Only