

# *Chem-Impex International, Inc.*

---

**Tel:** (630) 766-2112

**E-mail:** sales@chemimpex.com

**Shipping and Correspondence:**

935 Dillon Drive

Wood Dale, IL 60191

**Fax:** (630) 766-2218

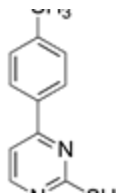
**Web site:** www.chemimpex.com

**Manufacturing site:**

825 Dillon Drive

Wood Dale, IL 60191

---



## *Product Specifications*

<b>Catalogue Number</b>	25573
<b>Product</b>	<b>4-(4-Methylphenyl)-2-pyrimidinethiol</b>
<b>CAS Number</b>	477859-71-5
<b>Molecular Formula</b>	C <sub>11</sub> H <sub>10</sub> N <sub>2</sub> S
<b>Molecular Weight</b>	202.28
<hr/>	
<b>Appearance</b>	Yellow crystalline powder
<b>Melting Point</b>	236-244 °C
<b>Purity by HPLC</b>	≥ 99%
<b>Storage</b>	Store at 0-8°C

**For Laboratory Use Only**