

Chem-Impex International, Inc.

Tel: (630) 766-2112

E-mail: sales@chemimpex.com

Shipping and Correspondence:

935 Dillon Drive

Wood Dale, IL 60191

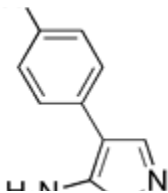
Fax: (630) 766-2218

Web site: www.chemimpex.com

Manufacturing site:

825 Dillon Drive

Wood Dale, IL 60191



Product Specifications

Catalogue Number	25535
Product	4-(4-Chlorophenyl)isoxazol-5-amine
	4-(4-Chlorophenyl)-5-isoxazolamine
CAS Number	64047-49-0
Molecular Formula	C ₉ H ₇ ClN ₂ O
Molecular Weight	194.62
<hr/>	
Appearance	Pale yellow powder
Melting Point	138-145 °C
Purity by HPLC	≥ 98%
Storage	Store at 0-8°C

For Laboratory Use Only