

Chem-Impex International, Inc.

Tel: (630) 766-2112

E-mail: sales@chemimpex.com

Shipping and Correspondence:

935 Dillon Drive

Wood Dale, IL 60191

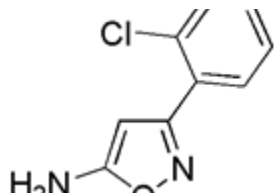
Fax: (630) 766-2218

Web site: www.chemimpex.com

Manufacturing site:

825 Dillon Drive

Wood Dale, IL 60191



Product Specifications

Catalogue Number	25531
Product	3-(2-Chlorophenyl)-5-isoxazolamine
	5-Amino-3-(2-chlorophenyl)isoxazole
	3-(2-Chlorophenyl)-1,2-oxazol-5-amine
CAS Number	27025-74-7
Molecular Formula	C ₉ H ₇ ClN ₂ O
Molecular Weight	194.62
Appearance	Light orange to yellow amorphous powder
Melting Point	70-76 °C
Purity by HPLC	≥ 98%
Storage	Store at 0-8°C

For Laboratory Use Only