

Chem-Impex International, Inc.

Tel: (630) 766-2112

E-mail: sales@chemimpex.com

Shipping and Correspondence:

935 Dillon Drive

Wood Dale, IL 60191

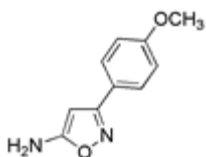
Fax: (630) 766-2218

Web site: www.chemimpex.com

Manufacturing site:

825 Dillon Drive

Wood Dale, IL 60191



Product Specifications

Catalogue Number	25528
Product	3-(4-Methoxyphenyl)-1,2-oxazol-5-amine
CAS Number	86685-98-5
Molecular Formula	C ₁₀ H ₁₀ N ₂ O ₂
Molecular Weight	190.2

Appearance	White to pale yellow crystals
Melting Point	134-140 °C
Purity by HPLC	≥ 98%
Storage	Store at 0-8°C

For Laboratory Use Only