

Chem-Impex International, Inc.

Tel: (630) 766-2112

E-mail: sales@chemimpex.com

Shipping and Correspondence:

935 Dillon Drive

Wood Dale, IL 60191

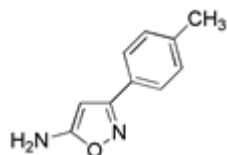
Fax: (630) 766-2218

Web site: www.chemimpex.com

Manufacturing site:

825 Dillon Drive

Wood Dale, IL 60191



Product Specifications

Catalogue Number	25526
Product	3-(4-Methylphenyl)isoxazol-5-amine
	5-Amino-3-(4-methylphenyl)isoxazole
CAS Number	28883-91-2
Molecular Formula	C ₁₀ H ₁₀ N ₂ O
Molecular Weight	174.2
<hr/>	
Appearance	Cream color crystalline solid
Melting Point	148-153 °C
Purity by HPLC	≥ 98%
Storage	Store at 0-8 °C

For Laboratory Use Only