

Chem-Impex International, Inc.

Tel: (630) 766-2112

E-mail: sales@chemimpex.com

Shipping and Correspondence:

935 Dillon Drive

Wood Dale, IL 60191

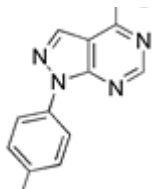
Fax: (630) 766-2218

Web site: www.chemimpex.com

Manufacturing site:

825 Dillon Drive

Wood Dale, IL 60191



Product Specifications

Catalogue Number	25459
Product	1-(4-Methoxyphenyl)-1H-pyrazolo[3,4-d]pyrimidin-4-amine
Molecular Formula	C ₁₂ H ₁₁ N ₅ O
Molecular Weight	241.25

Appearance	Cream color powder
Melting Point	212-220 °C
Purity by HPLC	≥ 98%
Storage	Store at 0-8 °C

For Laboratory Use Only