

Chem-Impex International, Inc.

Tel: (630) 766-2112

E-mail: sales@chemimpex.com

Shipping and Correspondence:

935 Dillon Drive

Wood Dale, IL 60191

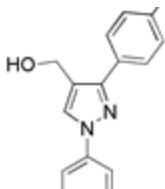
Fax: (630) 766-2218

Web site: www.chemimpex.com

Manufacturing site:

825 Dillon Drive

Wood Dale, IL 60191



Product Specifications

Catalogue Number	25342
Product	(3-(4-Chlorophenyl)-1-phenyl-1H-pyrazol-4-yl) methanol
CAS Number	36640-39-8
Molecular Formula	C ₁₆ H ₁₃ ClN ₂ O
Molecular Weight	284.75

Appearance	Off-white powder
Melting Point	140-142 °C
Purity by HPLC	≥ 99%
Storage	Store at 0-8°C

For Laboratory Use Only