

Chem-Impex International, Inc.

Tel: (630) 766-2112

E-mail: sales@chemimpex.com

Shipping and Correspondence:

935 Dillon Drive

Wood Dale, IL 60191

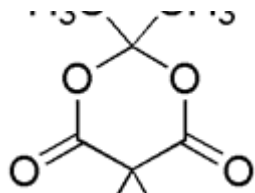
Fax: (630) 766-2218

Web site: www.chemimpex.com

Manufacturing site:

825 Dillon Drive

Wood Dale, IL 60191



Product Specifications

| | |
|--------------------------|----------------------------------------------------------------------------------------------------------------|
| Catalogue Number | 25002 |
| Product | Cyclic isopropylidene 1,1-cyclopropanedicarboxylate 6,6-Dimethyl-5,7-dioxaspiro[2.5]octane-4,8-dione |
| CAS Number | 5617-70-9 |
| Molecular Formula | C ₈ H ₁₀ O ₄ |
| Molecular Weight | 170.16 |
| Appearance | White needles |
| Melting Point | 67-73 °C |
| Purity by HPLC | ≥ 99% |
| Storage | Store at 0-8 °C |

For Laboratory Use Only