

Chem-Impex International, Inc.

Tel: (630) 766-2112

E-mail: sales@chemimpex.com

Shipping and Correspondence:

935 Dillon Drive

Wood Dale, IL 60191

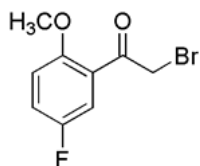
Fax: (630) 766-2218

Web site: www.chemimpex.com

Manufacturing site:

825 Dillon Drive

Wood Dale, IL 60191



Product Specifications

Catalogue Number	24998
Product	2-Bromo-1-(5-fluoro-2-methoxyphenyl) 2-Bromo-5'-fluoro-2'-methoxyacetophenone
CAS Number	443914-95-2
Molecular Formula	C ₉ H ₈ BrFO ₂
Molecular Weight	247.06

Appearance	White crystalline powder
Melting Point	76-82 °C
Purity by HPLC	≥ 98%
Storage	Store at 0-8°C

For Laboratory Use Only