

Chem-Impex International, Inc.

Tel: (630) 766-2112

E-mail: sales@chemimpex.com

Shipping and Correspondence:

935 Dillon Drive

Wood Dale, IL 60191

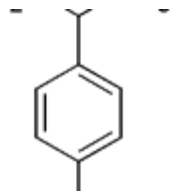
Fax: (630) 766-2218

Web site: www.chemimpex.com

Manufacturing site:

825 Dillon Drive

Wood Dale, IL 60191



Product Specifications

Catalogue Number	24995
Product	1-(4-Chlorophenyl)ethanamine
CAS Number	6299-02-1
Molecular Formula	C ₈ H ₁₀ ClN
Molecular Weight	155.63
<hr/>	
Appearance	Colorless liquid
¹H NMR	Conforms to structure
Assay	≥ 98%
Storage	Store at 0-8 °C

For Laboratory Use Only