

Chem-Impex International, Inc.

Tel: (630) 766-2112

E-mail: sales@chemimpex.com

Shipping and Correspondence:

935 Dillon Drive

Wood Dale, IL 60191

Fax: (630) 766-2218

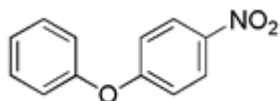
Web site: www.chemimpex.com

Manufacturing site:

825 Dillon Drive

Wood Dale, IL 60191

Product Specifications



Catalogue Number	24986
Product	4-Nitrophenyl phenyl ether 1-Nitro-4-phenoxybenzene 4-Nitrodiphenyl ether
CAS Number	620-88-2
Molecular Formula	C ₁₂ H ₉ NO ₃
Molecular Weight	215.21

Appearance	Beige crystalline solid or yellow crystals
Melting Point	52 - 60 °C
Purity by HPLC	≥ 97%
Storage	Store at RT

For Laboratory Use Only