

Chem-Impex International, Inc.

Tel: (630) 766-2112

E-mail: sales@chemimpex.com

Shipping and Correspondence:

935 Dillon Drive

Wood Dale, IL 60191

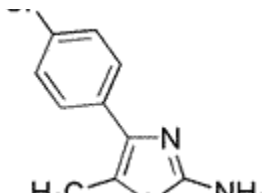
Fax: (630) 766-2218

Web site: www.chemimpex.com

Manufacturing site:

825 Dillon Drive

Wood Dale, IL 60191



Product Specifications

Catalogue Number	24943
Product	4-(4-Chlorophenyl)-5-methylthiazol-2-amine
CAS Number	82632-77-7
Molecular Formula	C ₁₀ H ₉ ClN ₂ S
Molecular Weight	224.71
<hr/>	
Appearance	Off-white powder
Melting Point	144-151 °C
Purity by HPLC	≥ 97%
Storage	Store at 0-8°C

For Laboratory Use Only