

Chem-Impex International, Inc.

Tel: (630) 766-2112

E-mail: sales@chemimpex.com

Shipping and Correspondence:

935 Dillon Drive

Wood Dale, IL 60191

Fax: (630) 766-2218

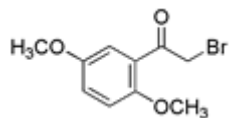
Web site: www.chemimpex.com

Manufacturing site:

825 Dillon Drive

Wood Dale, IL 60191

Product Specifications



Catalogue Number	24941
Product	2-Bromo-2',5'-dimethoxyacetophenone
	2,5-Dimethoxyphenacyl bromide
	2-Bromo-1-(2,5-dimethoxyphenyl)ethanone
CAS Number	1204-21-3
Molecular Formula	C ₁₀ H ₁₁ BrO ₃
Molecular Weight	259.1
<hr/>	
Appearance	Pale yellow solid
Melting Point	82 - 84 °C
Purity by HPLC	≥ 98%
Storage	Store at 0-8°C

For Laboratory Use Only