

Chem-Impex International, Inc.

Tel: (630) 766-2112

E-mail: sales@chemimpex.com

Shipping and Correspondence:

935 Dillon Drive

Wood Dale, IL 60191

Fax: (630) 766-2218

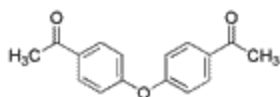
Web site: www.chemimpex.com

Manufacturing site:

825 Dillon Drive

Wood Dale, IL 60191

Product Specifications



Catalogue Number 24934
Product **4,4'-Diacetyldiphenyl ether**

1-[4-(4-Acetylphenoxy)phenyl]ethanone

CAS Number 2615-11-4

Molecular Formula C₁₆H₁₄O₃

Molecular Weight 254.28

Appearance Off-white powder

Melting Point 98-105 °C

Purity by HPLC ≥ 99%

Storage Store at 0-8 °C

For Laboratory Use Only