

Chem-Impex International, Inc.

Tel: (630) 766-2112

E-mail: sales@chemimpex.com

Shipping and Correspondence:

935 Dillon Drive

Wood Dale, IL 60191

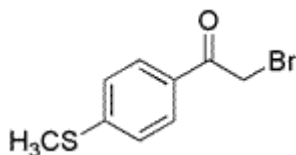
Fax: (630) 766-2218

Web site: www.chemimpex.com

Manufacturing site:

825 Dillon Drive

Wood Dale, IL 60191



Product Specifications

Catalogue Number	24865
Product	2-Bromo-1-(4-(methylthio)phenyl)ethanone 4'-Methylthio-2-bromoacetophenone 4-(Methylthio)phenacyl bromide
CAS Number	42445-46-5
Molecular Formula	C ₉ H ₉ BrOS
Molecular Weight	245.14

Appearance	Off-white flakes
Melting Point	58 - 66 °C
Purity by HPLC	≥ 98%
Storage	Store at 0 - 8 °C

For Laboratory Use Only