

Chem-Impex International, Inc.

Tel: (630) 766-2112

E-mail: sales@chemimpex.com

Shipping and Correspondence:

935 Dillon Drive

Wood Dale, IL 60191

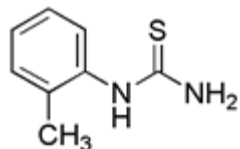
Fax: (630) 766-2218

Web site: www.chemimpex.com

Manufacturing site:

825 Dillon Drive

Wood Dale, IL 60191



Product Specifications

Catalogue Number	24849
Product	<i>N</i>-(2-Methylphenyl)thiourea <i>o</i> -Tolylthiourea Amino[(2-methylphenyl)amino]methane-1-thione
CAS Number	614-78-8
Molecular Formula	C ₈ H ₁₀ N ₂ S
Molecular Weight	166.25
Appearance	Off-white powder
¹H NMR	Conforms to structure
Purity by HPLC	≥ 98%
Storage	Store at 0-8 °C

For Laboratory Use Only