

Chem-Impex International, Inc.

Tel: (630) 766-2112

E-mail: sales@chemimpex.com

Shipping and Correspondence:

935 Dillon Drive

Wood Dale, IL 60191

Fax: (630) 766-2218

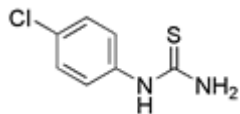
Web site: www.chemimpex.com

Manufacturing site:

825 Dillon Drive

Wood Dale, IL 60191

Product Specifications



Catalogue Number	24847
Product	<i>N</i>-(4-Chlorophenyl)thiourea
	1-(4-Chlorophenyl)thiourea
CAS Number	3696-23-9
Molecular Formula	C ₇ H ₇ ClN ₂ S
Molecular Weight	186.67

Appearance	Off-white to light yellow crystalline
¹H NMR	Conforms to structure
Purity by HPLC	≥ 98%
Storage	Store at 0-8 °C

For Laboratory Use Only