

Chem-Impex International, Inc.

Tel: (630) 766-2112

E-mail: sales@chemimpex.com

Shipping and Correspondence:

935 Dillon Drive

Wood Dale, IL 60191

Fax: (630) 766-2218

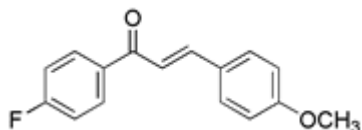
Web site: www.chemimpex.com

Manufacturing site:

825 Dillon Drive

Wood Dale, IL 60191

Product Specifications



Catalogue Number 24824

Product **4'-Fluoro-4-methoxychalcone**

(*E*)-1-(4-Fluorophenyl)-3-(4-methoxyphenyl)prop-2-en-1-one

CAS Number 2965-64-2

Molecular Formula C₁₆H₁₃FO₂

Molecular Weight 256.28

Appearance Pale yellow crystalline solid

Melting Point 106-112 °C

Purity by HPLC ≥ 98%

Storage Store at 0-8 °C

For Laboratory Use Only