

Chem-Impex International, Inc.

Tel: (630) 766-2112

E-mail: sales@chemimpex.com

Shipping and Correspondence:

935 Dillon Drive

Wood Dale, IL 60191

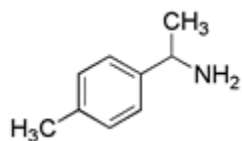
Fax: (630) 766-2218

Web site: www.chemimpex.com

Manufacturing site:

825 Dillon Drive

Wood Dale, IL 60191



Product Specifications

Catalogue Number	24701
Product	1-(4-Methylphenyl)ethanamine 1- <i>p</i> -Tolyethanamine
CAS Number	586-70-9
Molecular Formula	C ₉ H ₁₃ N
Molecular Weight	135.21
Appearance	Colorless liquid
Boiling point	76-82 °C/1 mm Hg
Purity by GC	≥ 99%
Storage	Store at 0-8 °C

For Laboratory Use Only