

Chem-Impex International, Inc.

Tel: (630) 766-2112

E-mail: sales@chemimpex.com

Shipping and Correspondence:

935 Dillon Drive

Wood Dale, IL 60191

Fax: (630) 766-2218

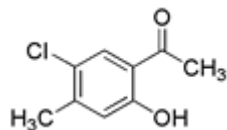
Web site: www.chemimpex.com

Manufacturing site:

825 Dillon Drive

Wood Dale, IL 60191

Product Specifications



Catalogue Number 24681
Product **5'-Chloro-2'-hydroxy-4'-methylacetophenone**

1-(5-Chloro-2-hydroxy-4-methylphenyl)ethanone

2-Acetyl-4-chloro-5-methylphenol

CAS Number 28480-70-8

Molecular Formula C₉H₉ClO₂

Molecular Weight 184.62

Appearance Off-white crystalline solid

Melting Point 68-74 °C

Purity by HPLC ≥ 99%

Storage Store at 0-8 °C

For Laboratory Use Only