

Chem-Impex International, Inc.

Tel: (630) 766-2112

E-mail: sales@chemimpex.com

Shipping and Correspondence:

935 Dillon Drive

Wood Dale, IL 60191

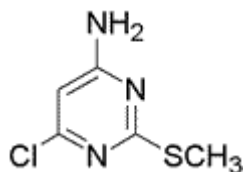
Fax: (630) 766-2218

Web site: www.chemimpex.com

Manufacturing site:

825 Dillon Drive

Wood Dale, IL 60191



Product Specifications

Catalogue Number	24648
Product	4-Amino-6-chloro-2-(methylthio)pyrimidine
CAS Number	1005-38-5
Molecular Formula	C ₅ H ₆ ClN ₃ S
Molecular Weight	175.64
<hr/>	
Appearance	White crystals
Melting Point	128-136 °C
Purity by HPLC	≥ 97%
Storage	Store at 0-8°C

For Laboratory Use Only