

Chem-Impex International, Inc.

Tel: (630) 766-2112

E-mail: sales@chemimpex.com

Shipping and Correspondence:

935 Dillon Drive

Wood Dale, IL 60191

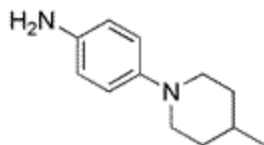
Fax: (630) 766-2218

Web site: www.chemimpex.com

Manufacturing site:

825 Dillon Drive

Wood Dale, IL 60191



Product Specifications

Catalogue Number	24641
Product	4-(4-Methyl-piperidin-1-yl)aniline
CAS Number	342013-25-6
Molecular Formula	C ₁₂ H ₁₈ N ₂
Molecular Weight	190.28

Appearance	Black solid
¹H NMR	Conforms to structure
Purity	≥ 95%
Storage	Store at 0 - 8 °C

For Laboratory Use Only