

Chem-Impex International, Inc.

Tel: (630) 766-2112

E-mail: sales@chemimpex.com

Shipping and Correspondence:

935 Dillon Drive

Wood Dale, IL 60191

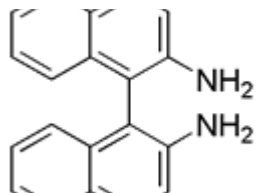
Fax: (630) 766-2218

Web site: www.chemimpex.com

Manufacturing site:

825 Dillon Drive

Wood Dale, IL 60191



Product Specifications

Catalogue Number	24623
Product	1,1'-Binaphthyl-2,2'-diamine
	2,2-Diamino-1,1'-binaphthalene
CAS Number	4488-22-6
Molecular Formula	C ₂₀ H ₁₆ N ₂
Molecular Weight	284.36
<hr/>	
Appearance	White crystal
Melting Point	183-192 °C
Purity by HPLC	≥ 99%
Storage	Store at 0-8 °C

For Laboratory Use Only