

# Chem-Impex International, Inc.

---

**Tel:** (630) 766-2112

**E-mail:** sales@chemimpex.com

**Shipping and Correspondence:**

935 Dillon Drive

Wood Dale, IL 60191

**Fax:** (630) 766-2218

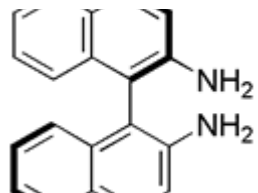
**Web site:** www.chemimpex.com

**Manufacturing site:**

825 Dillon Drive

Wood Dale, IL 60191

---



## Product Specifications

|                          |                                                                                                                                    |
|--------------------------|------------------------------------------------------------------------------------------------------------------------------------|
| <b>Catalogue Number</b>  | 24622                                                                                                                              |
| <b>Product</b>           | <b>(R)-(+)-1,1'-Binaphthyl-2,2'-diamine</b><br><br>(R)-(+)-1,1'-Bi(2-naphthylamine)<br><br>(R)-(+)-2,2'-Diamino-1,1'-binaphthalene |
| <b>CAS Number</b>        | 18741-85-0                                                                                                                         |
| <b>Molecular Formula</b> | C <sub>20</sub> H <sub>16</sub> N <sub>2</sub>                                                                                     |
| <b>Molecular Weight</b>  | 284.36                                                                                                                             |
| <hr/>                    |                                                                                                                                    |
| <b>Appearance</b>        | White solid                                                                                                                        |
| <b>Melting Point</b>     | 238-244 °C                                                                                                                         |
| <b>Optical Rotation</b>  | [α] <sub>D</sub> <sup>25</sup> = + 156 ± 0.5 ° (C=1.0 in pyridine)                                                                 |
| <b>Chiral HPLC</b>       | ≥ 99% (ee)                                                                                                                         |
| <b>Purity by HPLC</b>    | ≥ 99%                                                                                                                              |
| <b>Storage</b>           | Store at 0-8°C                                                                                                                     |

**For Laboratory Use Only**