

# Chem-Impex International, Inc.

---

**Tel:** (630) 766-2112

**E-mail:** sales@chemimpex.com

**Shipping and Correspondence:**

935 Dillon Drive

Wood Dale, IL 60191

**Fax:** (630) 766-2218

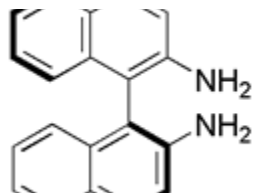
**Web site:** www.chemimpex.com

**Manufacturing site:**

825 Dillon Drive

Wood Dale, IL 60191

---



## Product Specifications

<b>Catalogue Number</b>	24613
<b>Product</b>	<b>(S)-(-)-1,1'-Binaphthyl-2,2'-diamine</b>  (S)-(-)-1,1'-Bi(2-naphthylamine)  (S)-(-)-2,2'-Diamino-1,1'-binaphthalene
<b>CAS Number</b>	18531-95-8
<b>Molecular Formula</b>	C <sub>20</sub> H <sub>16</sub> N <sub>2</sub>
<b>Molecular Weight</b>	284.36
<hr/>	
<b>Appearance</b>	White solid
<b>Melting Point</b>	240-246 °C
<b>Optical Rotation</b>	[α] <sub>D</sub> <sup>25</sup> = + 156 ± 0.5 ° (C=1.0 in pyridine)
<b>Chiral HPLC</b>	≥ 99% (ee)
<b>Purity by HPLC</b>	≥ 99%
<b>Storage</b>	Store at 0-8°C

**For Laboratory Use Only**