

Chem-Impex International, Inc.

Tel: (630) 766-2112

E-mail: sales@chemimpex.com

Shipping and Correspondence:

935 Dillon Drive

Wood Dale, IL 60191

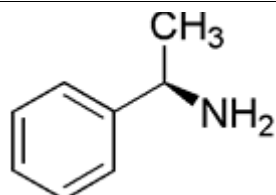
Fax: (630) 766-2218

Web site: www.chemimpex.com

Manufacturing site:

825 Dillon Drive

Wood Dale, IL 60191



Product Specifications

Catalogue Number	24594
Product	(R)-(+)-alpha-Methylbenzylamine (R)-(+)-1-Phenylethylamine D-(+)-alpha-Aminoethylbenzene
CAS Number	3886-69-9
Molecular Formula	C ₈ H ₁₁ N
Molecular Weight	121.18

Appearance	Colorless transparent liquid
Water Content (Karl Fisher)	≤ 0.5%
Optical Rotation	[α] _D ²⁰ = 38 ± 2 ° (Lit.)
Assay	≥ 99%
Storage	Store at 0 - 8 °C

For Laboratory Use Only