

Chem-Impex International, Inc.

Tel: (630) 766-2112

E-mail: sales@chemimpex.com

Shipping and Correspondence:

935 Dillon Drive

Wood Dale, IL 60191

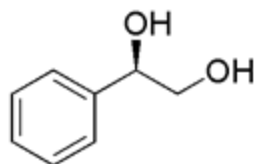
Fax: (630) 766-2218

Web site: www.chemimpex.com

Manufacturing site:

825 Dillon Drive

Wood Dale, IL 60191



Product Specifications

Catalogue Number	24591
Product	(R)-(-)-1-Phenyl-1,2-ethanediol (-)-Styrene glycol (R)-(-)-Phenylethylene glycol
CAS Number	16355-00-3
Molecular Formula	C ₈ H ₁₀ O ₂
Molecular Weight	138.17
Appearance	White to off-white crystalline powder
Melting Point	64-67 °C
Water Content (Karl Fisher)	≤ 0.5%
Optical Rotation	[α] _D ²⁰ = -69 ± 2° (C=1 in CHCl ₃)
¹H NMR	Conforms to structure
Purity by GC	≥ 99%
Storage	Store at 0-8 °C

For Laboratory Use Only